









ZEEZWALUW

CREW/PILOT/SURVEY VESSEL

 TYPE MONOHULL	 CAPACITY 12 PAX	 FUEL LTR/HR 120 LTR	 LENGTH 23,37 M	 SHIP-TO-SHIP ALL SIDES	 SPEED 17 KTS
--	--	--	---	---	---

SIMA CHARTERS DISTINGUISHES ITSELF WITH ITS 'NO-NONSENSE' APPROACH AND 'HANDS-ON' MENTALITY. EXPERIENCED IN TENDERSERVICES AND OFFSHORE PROJECTS IS COMBINED IN THE MISSION TO OPTIMIZE PERFORMANCE. WE ALWAYS AIM TO PROVIDE THE BEST POSSIBLE SOLUTION.

GENERAL SPECIFICATIONS

Year	1971
Class/flag	RHC 30 NM / NL Flag
Length o.a	23,37 m
Beam o.a	5,19 m
Minimum draft	1.1 m
Weight	42 T
Loading capacity	5 T
Max speed	17 kts @ 255 ltr/h
Fuel consumption per 12 hours	700 ltrs (based on projects 30 NM offshore)

Callsign	PDVF
Official Number	923668
MMSI	246951000 / 8434130
Engine's	2 x 265 kW / 360 HP
Aux engine	1 x 11,5 kW silent pack
Propulsion	2 x fixed-pitch propeller
Characteristics	12 pax, air-conditioned, Hadrian-rail, double wide bed in fwd cabin



OUTSTANDING CTV SERVICES

MAXIMISING SAFETY AND COMFORT FOR CREW AND CARGO

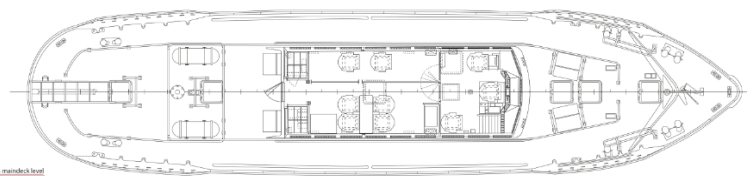
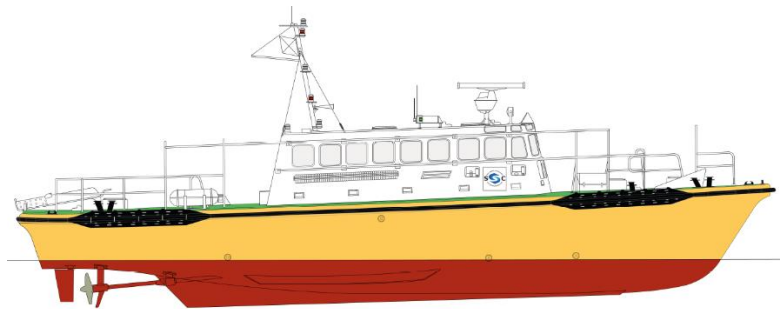


SIMA CHARTERS IS A WORLDWIDE OPERATING OFFSHORE CTV COMPANY, PROVIDING THE BEST POSSIBLE CREW TENDER VESSELS, DESIGNED TO PERFORM. WITH PURPOSE BUILT, TOP-NOTCH VESSELS, SIMA CHARTERS PROVIDE THE SAFEST AND MOST COMFORTABLE RIDE AT SEA.

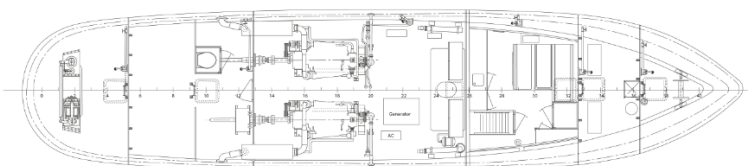
- // Fast crew transfer vessels
- // Up to 24 passengers per vessel
- // Also suitable for supplies and spare parts
- // Gyro stabilizations systems
- // Special monohull design
- // Type specific MOB recovery systems
- // Fuel efficient, low CO₂ footprint
- // Navigation & communication systems according to the Class regulations
- // ISM and ISO certified by Lloyds Register
- // Personnel are trained and familiarized according to the high QHSE procedures

For more information please do not hesitate to contact us, we'd love to get in touch.

GENERAL ARRANGEMENT ZEEZWALUW



View on maindeck level



View on inner deck level



- ☎ +31 10 434 63 87
- ☎ commercial@simacharters.com
- ☎ WWW.SIMACHARTERS.COM



SIMA CHARTERS
crew- pilot & survey vessels