



SC ROTTERDAM

24 PAX HIGH SPEED OFFSHORE SERVICE CRAFT



TYPE

**HIGH SPEED
CREW TENDER**



COMFORT

GYRO



FUEL 12/H

1800 LTR*



SHIP-TO-SHIP

YES



SPEED

30 KTS

SIMA CHARTERS DISTINGUISHES ITSELF IN THE MARKET WITH ITS 'NO-NONSENSE' APPROACH AND 'HANDS-ON' MENTALITY. EXPERIENCE IN LOCAL TENDERSERVICES AND OFFSHORE PROJECTS IS COMBINED IN THE MISSION TO MAXIMISE PERFORMANCE. WE ALWAYS AIM TO PROVIDE THE BEST POSSIBLE AND SOLUTION. THIS GOES AS FAR AS MODIFYING THE CURRENT FLEET OR EVEN BUILDING ANOTHER CUSTOM-MADE VESSEL.

GENERAL SPECIFICATIONS

| | | | |
|----------------------|--|---------------------|---|
| Type of vessel | High Speed Offshore Service Craft | Output main engines | 3x 970 kW |
| Class/flag | Bureau Veritas / The Netherlands High speed craft - CAT A, sea area 3 | Bow thruster | 63 kW |
| Main dimensions | 31,3 x 7,4 x 3,45 m | Gyro stabilizer | Seakeeper M35000 |
| GT / NT | 159 / 47 | Hydraulic crane | Palfinger PK 12000M, SWL 1,5 ton at 4,5m outreach |
| Draught at half load | 1,3 m | Tank capacities | Fuel: 17 m ³ (separate fuel tank of 6m ³ for fuel transfer only) Water: 2,4 m ³ ; Sewage: 2,3 m ³ |
| Crew / passengers | 3 / 24 | Deck load max. | 1,3 ton/m ² |
| Max.Speed | 30 knots | Deck space | space available for 1x 20ft container (max. 10 ton weight), MOB-Lift Front 20m ³ , Aft 65m ² |
| Hull/superstructure | Aluminium | | |
| Engines | Cat C32 Acert, C rating | | |
| Propulsion | Waterjet, Rolls-Royce - AA56A3, 2x with bucket, 1x booster | | |

OUTSTANDING CTV SERVICES

MAXIMISING SAFETY AND COMFORT FOR CREW AND CARGO

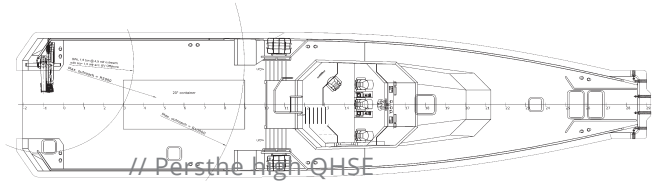
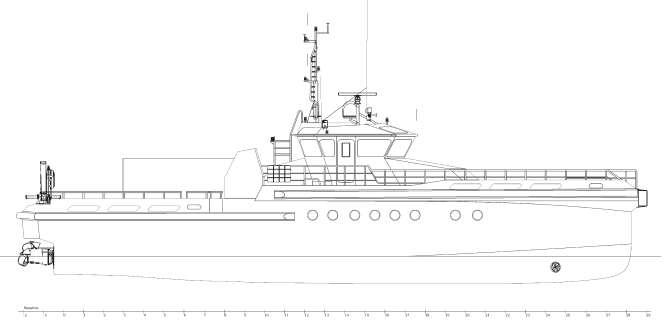
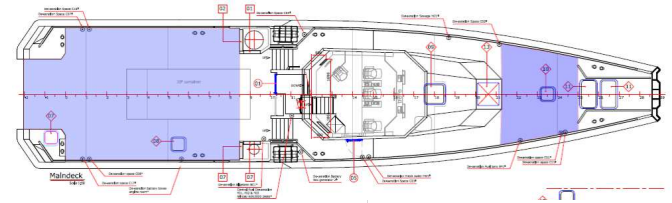


SIMA CHARTERS IS A WORLDWIDE OPERATING OFFSHORE CTV COMPANY, PROVIDING THE BEST POSSIBLE CREW TENDER VESSELS, DESIGNED TO PERFORM. WITH PURPOSE BUILT, TOP-NOTCH VESSELS, SIMA CHARTERS PROVIDE THE SAFEST AND MOST COMFORTABLE RIDE AT SEA.

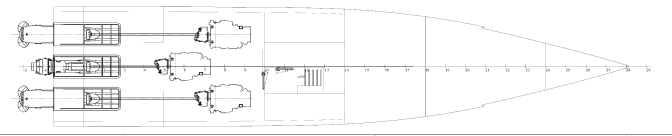
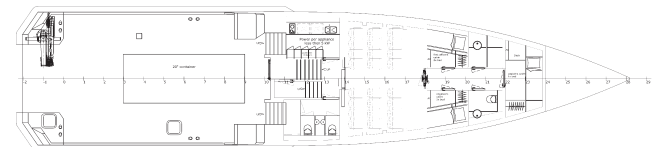
- // Fast crew transfer vessels
- // 24 PAX
- // Also suitable for offshore cargo transport and supply runs
- // Gyro stabilization system for motion compensation
- // Slender monohull design for transfer comfort
- // Type specific MOB recovery systems
- // High speed offshore service craft
- // Bureau Veritas classed, constructed conform HSC
- // ISM, ISO900, ISO45001 and Safety culture ladder certified by Lloyds Register, The Netherlands
- // Personnel are trained and familiarized according high QHSE procedures

For more information please do not hesitate to contact us, we'd love to get in touch.

GENERAL ARRANGEMENT



// Per the high QHSE procedures



SIMA CHARTERS
crew- pilot & survey vessels

+31 10 434 63 87 // commercial@simacharters.com // www.simacharters.com
Burgemeester de Jonkhade 19 // 3143 CB Maassluis // The Netherlands