



# SC EMERALD

CREW - PILOT & SURVEY VESSEL



TYPE  
**MONOHULL**



COMFORT  
**SEAKEEPER**



FUEL/H  
**220 LTR**



FUEL 12/H  
**550 LTR\***



SHIP-TO-SHIP  
**ALL SIDES**



SPEED  
**30 KTS**

SIMA CHARTERS DISTINGUISHES ITSELF IN THE MARKET WITH ITS 'NO-NONSENSE' APPROACH AND 'HANDS-ON' MENTALITY. EXPERIENCE IN LOCAL TENDERSERVICES AND OFFSHORE PROJECTS IS COMBINED IN THE MISSION TO MAXIMISE PERFORMANCE. WE ALWAYS AIM TO PROVIDE THE BEST POSSIBLE AND SOLUTION. THIS GOES AS FAR AS MODIFYING THE CURRENT FLEET OR EVEN BUILDING ANOTHER CUSTOM-MADE VESSEL.

## GENERAL SPECIFICATIONS

Year	2018	Callsign	PEFN
Class/flag	RINA cat 2 60 NM / NL flag	Official Number	63614
Length o.a	18,58 m	MMSI	232017739
Beam o.a	5,45 m	Engine's	2 x 650 HP / 478 kW
Minimum draft	0,8 m	Aux engine	1 x 18 kW
Weight	29,19 T	Propulsion	2 x Waterjets
Loading capacity	5 T	Characteristics	12 pax, pilot boat endorsment,- seakeeper,big aftdeck, MOB-lift
Max speed	30 kts @ 220 ltr/h		
Fuel consumption per 12 hours	550 liter (*based on projects 20NM offshore )		



# OUTSTANDING CTV SERVICES

MAXIMISING SAFETY AND COMFORT FOR CREW AND CARGO

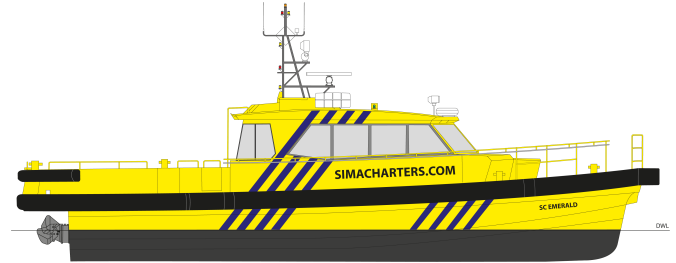


**SIMA CHARTERS IS A WORLDWIDE OPERATING OFFSHORE CTV COMPANY, PROVIDING THE BEST POSSIBLE CREW TENDER VESSELS, DESIGNED TO PERFORM. WITH PURPOSE BUILT, TOP-NOTCH VESSELS, SIMA CHARTERS PROVIDE THE SAFEST AND MOST COMFORTABLE RIDE AT SEA.**

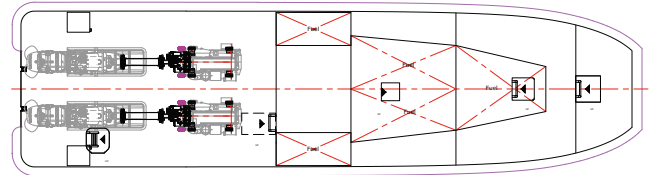
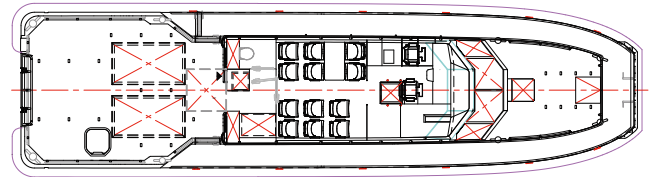
- // Fast crew transfer vessels
- // Up to 12 passengers per vessel
- // Also suitable for supplies and spare parts
- // Gyro stabilizations systems
- // Special monohull design
- // Type specific MOB recovery systems
- // Fuel efficient, low CO<sub>2</sub> footprint
- // Navigation & communication systems according to the Class regulations
- // ISM, ISO9001, ISO45001 and Safety culture ladder certified by LRQA
- // Personnel are trained and familiarized according to the high QHSE procedures

For more information please do not hesitate to contact us, we'd love to get in touch

## GENERAL ARRANGEMENT SC EMERALD



OUTBOARD PROFILE



**SIMA CHARTERS**  
crew- pilot & survey vessels

+31 10 434 63 87 // commercial@simacharters.com // www.simacharters.com  
Burgemeester de Jongsdijk 19 // 3143 CB Maassluis // The Netherlands