



SC FALCON

CREW - PILOT & SURVEY VESSEL

 TYPE CATAMARAN	 CAPACITY 12 PAX	 FUEL LTR/HR 180 LTR	 LENGTH 18.50 M	 SHIP-TO-SHIP BOW	 SPEED 30 KTS
---	--	--	---	---	---

SIMA CHARTERS DISTINGUISHES ITSELF WITH ITS 'NO-NONSENSE' APPROACH AND 'HANDS-ON' MENTALITY. EXPERIENCED IN TENDERSERVICES AND OFFSHORE PROJECTS IS COMBINED IN THE MISSION TO OPTIMIZE PERFORMANCE. WE ALWAYS AIM TO PROVIDE THE BEST POSSIBLE SOLUTION.

GENERAL SPECIFICATIONS

Year	2014
Class/flag	RINA 60 NM / NL flag
Length o.a	18,50 m
Beam o.a	6,10 m
Minimum draft	1.50 m
Weight	27.75 T
Loading capacity	10 T
Max speed	30 kts @ 180 ltr/h
Fuel consumption per 12 hours	450 litres (based on projects 20NM offshore)

Callsign	PEDC
Official Number	26670 Z 2022
MMSI	246812000
Engine's	2 x 800 HP / 588 kW
Aux engine	1 x 9,5 kW
Propulsion	2 x IPS
Characteristics	12 pax, fuel transfer pump, 14 m3 fuel capacity, fwd/aft adjustable wheelhouse



OUTSTANDING CTV SERVICES

MAXIMISING SAFETY AND COMFORT FOR CREW AND CARGO

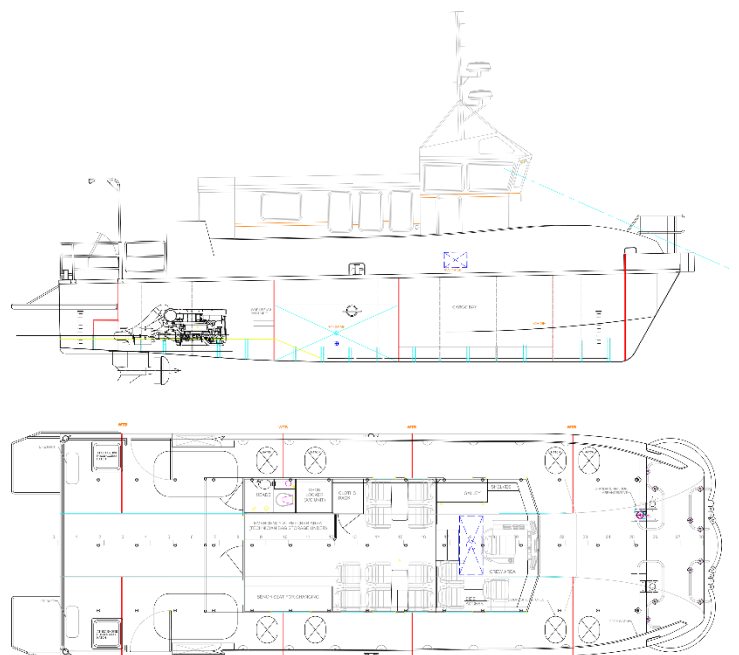


SIMA CHARTERS IS A WORLDWIDE OPERATING OFFSHORE CTV COMPANY, PROVIDING THE BEST POSSIBLE CREW TENDER VESSELS, DESIGNED TO PERFORM. WITH PURPOSE BUILT, TOP-NOTCH VESSELS, SIMA CHARTERS PROVIDE THE SAFEST AND MOST COMFORTABLE RIDE AT SEA.

- // Fast crew transfer vessels
- // Up to 12 passengers per vessel
- // Also suitable for supplies and spare parts
- // Catamaran design
- // Efficient manoeuvrability due to IPS drives
- // Extremely fuel efficient, low CO₂ footprint
- // Navigation & communication systems according to the Class regulations
- // superstructure movable to create deck space fwd or aft
- // ISM and ISO certified by Lloyds Register
- // Personnel are trained and familiarized according to the high QHSE procedures

For more information please do not hesitate to contact us, we'd love to get in touch.

GENERAL ARRANGEMENT SC FALCON



- ☎ +31 10 434 63 87
- ☎ commercial@simacharters.com
- ☎ WWW.SIMACHARTERS.COM



SIMA CHARTERS
crew- pilot & survey vessels